



Supporting Great Communities

# Annual Report 2015

# Contents



<b>1. Chair &amp; CEO Report</b>	<b>3</b>	<b>4. Scholarships</b>	<b>17</b>
1.1 Financial Performance and Investments	4	4.1 Callum Hunter - Dillon Scholarship Recipient	18
1.2 Community Investment	4	4.2 Kimberley Maxwell - Bruce Cronin BayTrust Scholarship	18
1.3 Future Performance	5		
1.4 Other Highlights	5	<b>5. Beyond Funding</b>	<b>19</b>
1.5 Trustees and Staff	6	5.1 Social Loans Help More Bay Families Into Homes	21
		5.2 Creating a Connected Social Sector in the Western Bay	22
<b>2. Governance</b>	<b>7</b>	5.3 Working Collaboratively to Achieve a Brighter Future	23
2.1 Investments and Future Granting	8		
2.2 Strategy	9	<b>6. Summary of Financial Statements</b>	<b>24</b>
2.3 Governance	11	6.1 Notes to the Summary of Financial Statements	25
		6.2 Bay of Plenty Community Trust Incorporated 2015 Financial Statements	26
<b>3. How We Make a Difference</b>	<b>12</b>		
3.1 Finding Themselves While Learning to Save Others	13	<b>7. Auditors Report</b>	<b>27</b>
3.2 Creating Local Jobs to Boost the Eastern Bay's Prosperity	13	7.1 Independent Auditors Report on the Summarised Financial Statements	28
3.3 Remembering the Bay's ANZAC Heroes	14		
3.4 Creating a Happier Home for Bay Men and Their Families	14	<b>8. Grants Expenditure</b>	<b>29</b>
3.5 Project Tongariro: Helping Look After Our Land for 30 Years	15	8.1 Grants Expenditure to 31 March 2015	30
3.6 Helping Rotorua Students Get Back on Track	15		
3.7 Sport Bay of Plenty - CoachForce	16		
3.8 BayTrust Rescue Helicopter	16		

# 1. Chair & CEO Report

It's a pleasure to share BayTrust's activities, achievements and highlights for the year to 31 March 2015.

## 1.1 Financial Performance and Investments

**It has been another excellent year financially for the Trust coming on top of very strong financial performances over the last 3 years.**

Overall BayTrust's investments returned \$24m (14%) (2014 \$17m, 11%) for the year with all asset classes performing strongly. These results mean that the Trust has recovered well from the Global Financial Crisis and as a result, Trustees are planning to significantly increase BayTrust's community investments in future years.

The Trust's investment portfolio is well diversified under a Fiduciary Management Agreement with Russell Investment Group with a spread across a range of asset classes including Australasian and Overseas Equities; and Overseas and NZ Fixed Interest. This spread is designed to achieve BayTrust's goals of maximising the income available for community investment over the long term and protecting the real (inflation-adjusted) value of the Trust's capital.

During the year Trustees made a decision to add Private Equity to the Investment Portfolio with a cap of up to 5% of investments into this mandate. As part of this, BayTrust has now made commitments to two Private Equity investment funds of AUD \$3m and NZD \$1m with these commitments to be drawn down over coming years.

At year-end actual net capital of BayTrust was \$193m, up from \$174m at 31 March 2014.

## 1.2 Community Investment

**In the 12 months to 31 March 2015 BayTrust committed a total of \$2.871m in grants** (2014 \$1.940m) to 157 community organisations including \$95,352 in Dillon Scholarships (2014 \$98,289) to 40 tertiary students with significant disabilities. The Trust also provided other significant community support during the year (\$271,000) delivered in a variety of ways including capacity-building opportunities which were extremely well received by the community.

BayTrust has increased its social loans portfolio by a further \$0.8m by providing low-interest social loans to Habitat for Humanity and the Tauranga Community Housing Trust to support affordable and social housing initiatives in our region.

### 1.3 Future Performance

**BayTrust’s view is that the very strong investment returns that have been achieved over the last three years (13%) are unlikely to be achieved in the coming years with a return of 5.6% being used for grant forecasting purposes.**

However, in spite of the forecast reduction in returns we are looking to significantly increase our community investment in future years as a result of the growth in our grants reserves (\$50.9m versus \$33.8m in the prior year) and our larger investment base that has been built up over the past years through wise and prudent investment decisions by our Trustees.

A complete review of our granting policies, strategies and funding frameworks is now underway to help make the most of these extra funds and to provide greater clarity and certainty for our grantees.

### 1.4 Other highlights during the BayTrust year include:

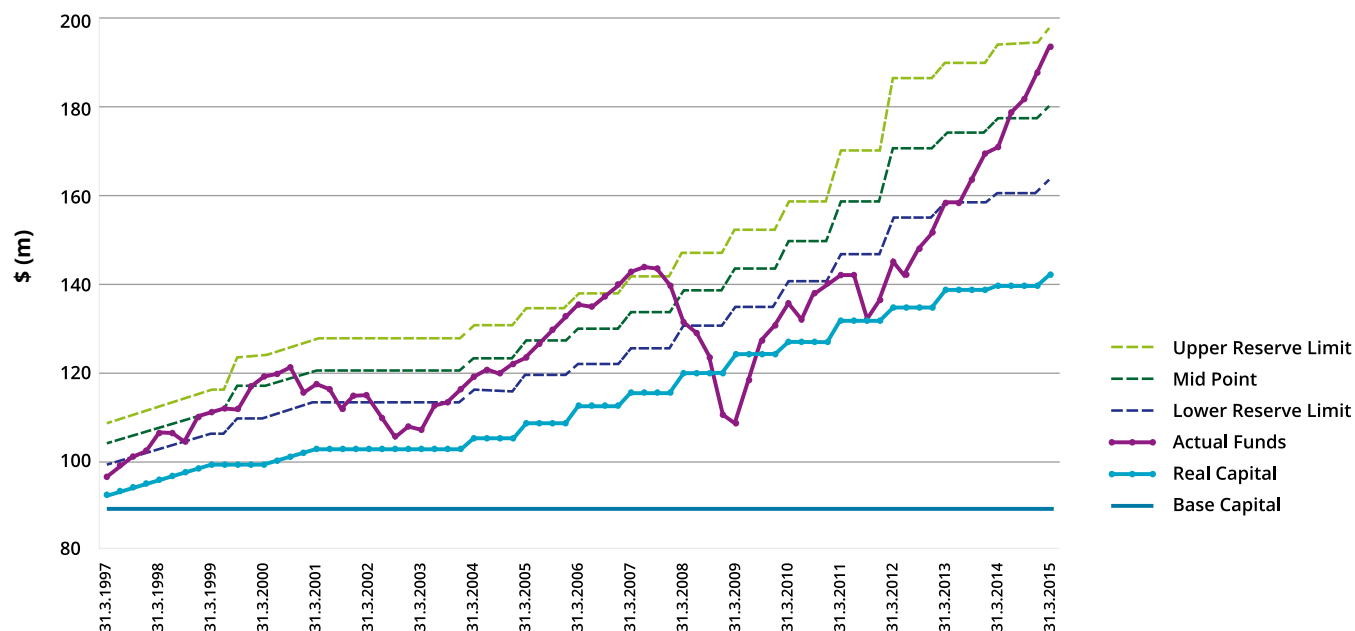
**A complete strategic review** which led to a new organisational design including the appointment of CEO, Alastair Rhodes.

**Setting up the Bruce Cronin BayTrust scholarship** – named after long-time Trust Manager Bruce Cronin who retired in December 2014 in recognition of his service to the people of the Bay of Plenty and BayTrust. BayTrust will award this scholarship once a year to support a Masters or Doctoral student carrying out research in mathematics, science or information technology that will benefit the region.

**From August 2014 our grantees are able to submit their grant applications online**, and we expect to roll out further improvements to this system in coming months.

**Partnering with the Ministry of Social Development and the Community Response Forum** on research released in February on the first 1000 days of a child’s life and youth engagement.

**Reserving Chart**



**The continuation of the BayTrust/Sport BOP CoachForce programme now in its 18th year.** The programme aims to get more people (especially young people) more active more often through gaining, training and retaining sports coaches in the Bay. The current three-year contract commenced on 1 July 2013; providing \$1.268m of funding over three years.

**On 1 June 2014 Wayne Marriott replaced Karla Hammond as one of the two Trustee appointments representing the Eastern BOP.**

On the 28th of May 2015 Jenny Mahoney JP, the Trust Chair from 1 December 2013 retired as Chair with the Deputy Chair Kylie Hawker-Green taking over in an interim capacity until a new Trust Chair is elected. The Trustees would like to publicly thank and acknowledge the contributions made by Jenny Mahoney JP, as Chair and look forward to continuing to work with her as a Trustee.

Lastly a big thank you to all Trustees and staff who have worked long and hard over the past 12 months to deliver the Trust's vision to Bay of Plenty Communities and an even bigger thank you to all the wonderful BOP community groups and their supporters for their ongoing work in helping make the Bay such a fantastic place to raise a family, live work and play.

**Kylie Hawker-Green**

**Alastair Rhodes**




**Chair**

**Chief Executive Officer**

27 June 2015

## 1.5

### Bay Trustees and Staff 2015



Back: Gregg Brown, Wayne Marriott, Bill Cleghorn, Kenneth Brown, Steve Morris, Nigel McAdie, Michael Christensen, Alastair Rhodes (CEO)

Front: Pamela Lewis, Yvonne Baldock (Finance Services Manager), Jenny Mahoney, Kylie Hawker-Green (Chair), Terri Eggleton (Community Investment Advisor)

Inset: Roku Mihini



Trustees and staff of BayTrust would like to acknowledge the sad passing of our Trustee, Tracy Rea, in June 2015. Tracy was a very passionate Trustee and had a particular interest in the first thousand days of a child's development. Tracy made a significant contribution not only to the Trust, but to the communities she supported.

## 2. Governance

2.1

### Investments and Future Granting

**Our Investment Committee, Chaired by Bill Cleghorn together with our Investment Advisors, Russell Investments and the BayTrust Board run a balanced portfolio of over \$193m in assets including global bonds and global equities, NZ cash, Australasian equities, social loans and private equity.**

Our overall objective is to protect and equitably grow BayTrust’s investment capital so that it can provide

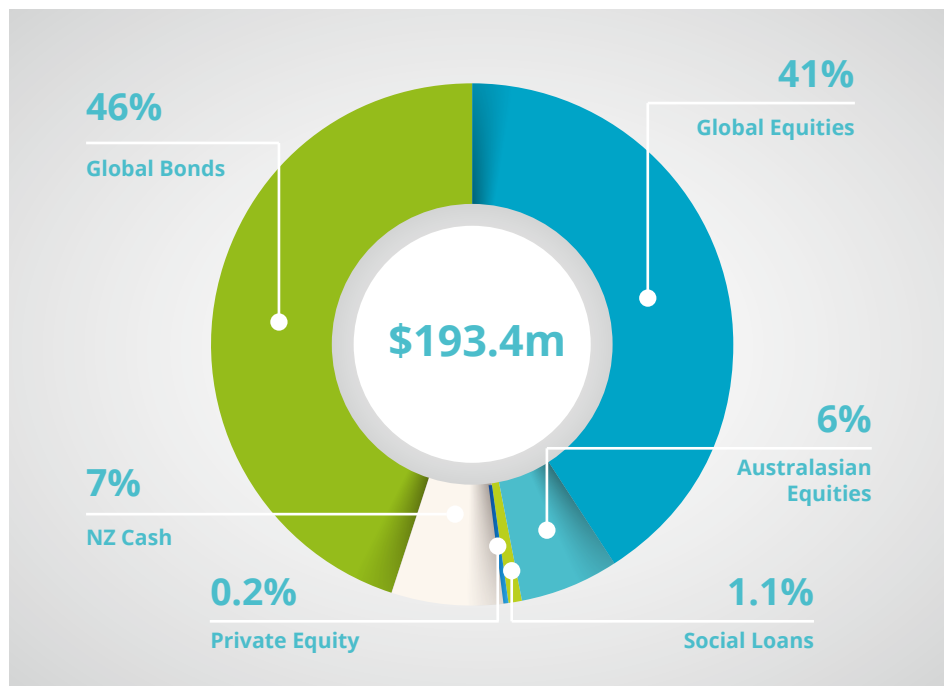
ongoing returns for distribution to current and future BOP communities.

Our asset base has grown from \$89m when we were first established in 1988 to over \$193m, with returns of over 10 per cent being achieved in the last three years. Assuming no global financial crises or similar events derail our plans, those assets are forecast to grow steadily in coming years which will allow us to increase our granting from \$3m this year to \$5m a year in coming years, equating to \$10m of additional funding being available to the community over the next 5 years.

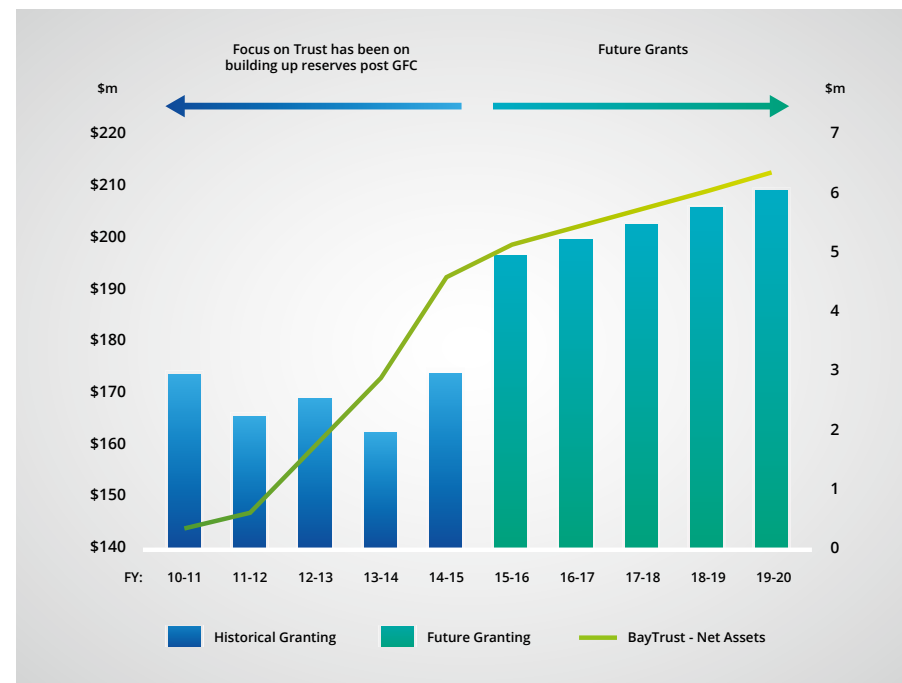
We are also looking to materially expand our Social Investment Portfolio (such as low interest loans) in the Bay of Plenty from the \$2.7m of commitments we have made already. The intentions of the social investment portfolio is to deliver a social impact alongside an economic return.

Our increased investment base and positive returns will ensure BayTrust can make an even bigger difference to our local community by granting more money to local organisations and projects that meet our strategic priorities.

BayTrusts Investment Portfolio - 31 March 2015



Projected Community Granting FY16-20





## 2.2

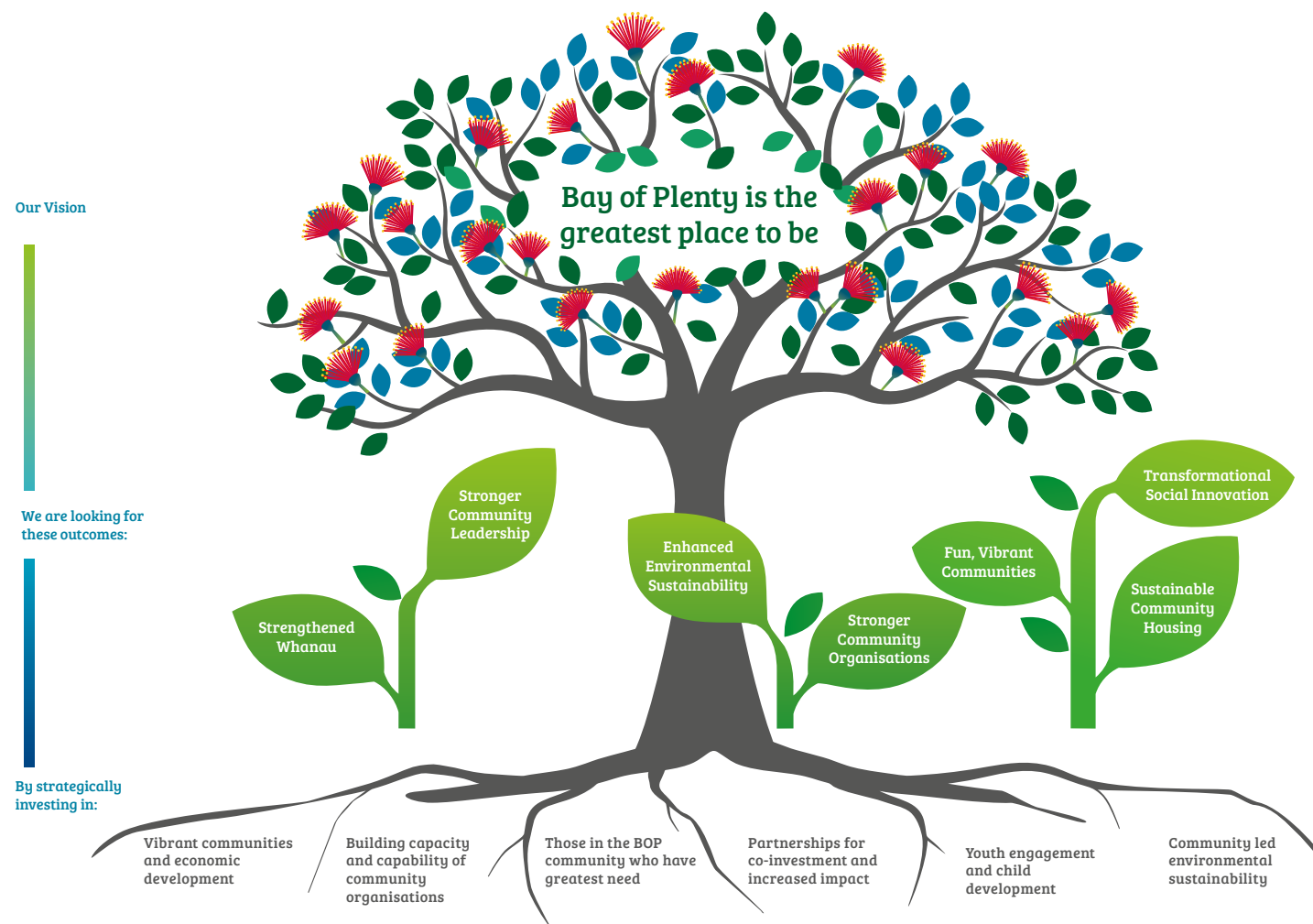
## Strategy

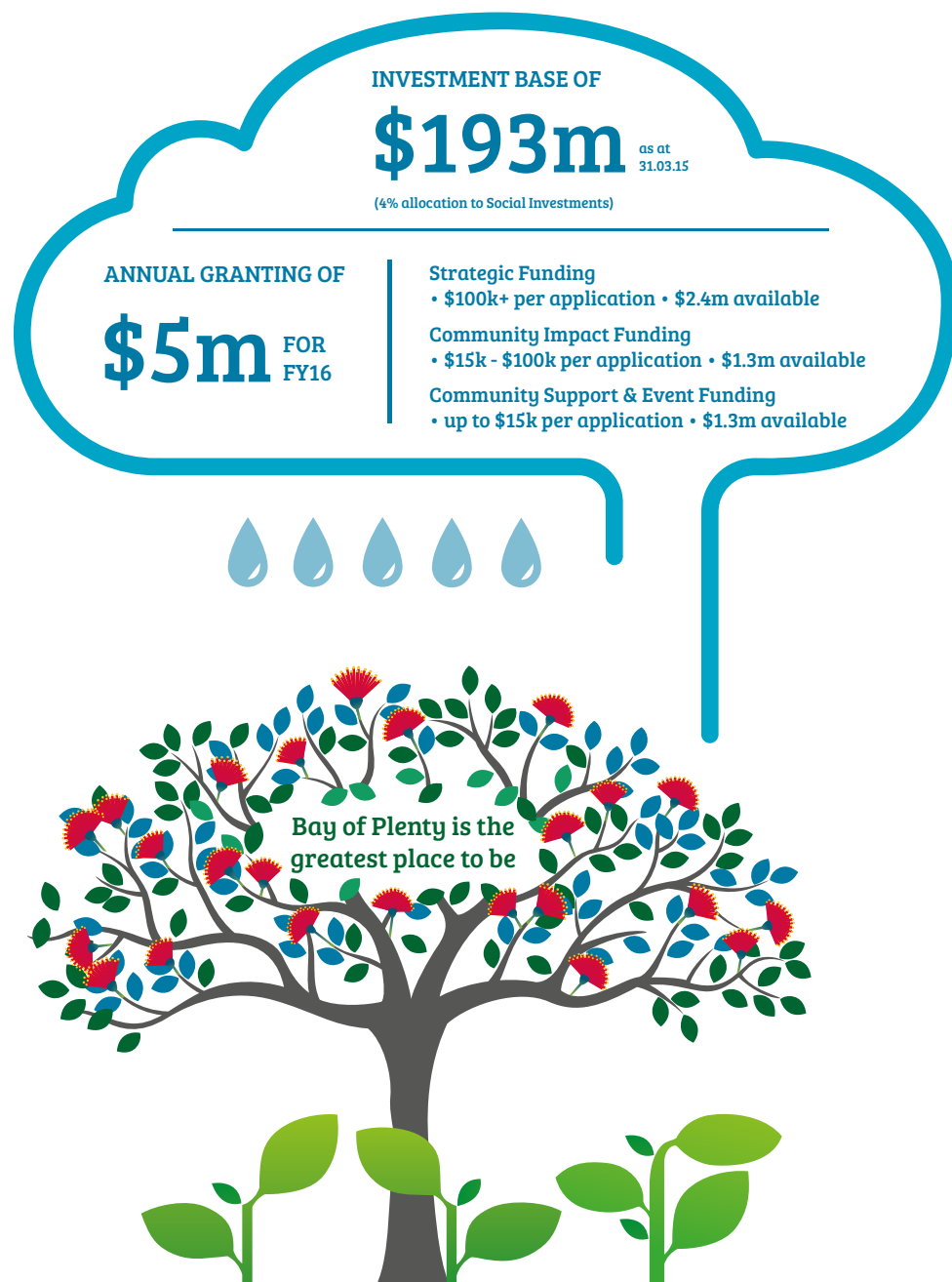
**As the world around us continues to evolve, our region's demographics and community needs and aspirations have changed.**

Over the past six months we have thoroughly reviewed BayTrust's strategies to recognise these changes and to make the most of the extra funding opportunities that lie ahead (\$10m of additional funding available over the next five years). This is a very exciting prospect for us and we've been working hard to review BayTrust's overall vision alongside our outcomes to ensure we invest the additional funds where they can make the biggest impact.

The Centre for Social Impact has assisted with our strategic review, with input from Trustees, key community stakeholders and BayTrust staff. Our priorities have been narrowed down and measurable outcomes have been developed. We have created a new vision statement, logo and tagline which reflects our intergenerational role in our communities. The new logo reflects our core environmental values and the BOP region whilst retaining strong links to our past and where we have come from.

BayTrust is striving to take a greater leadership role in the Bay of Plenty and to this end we are pleased to present our new strategic direction, brand and outcomes to you. The details behind these changes, and implications for grantees, will be progressively rolled out and communicated over the coming months.



**Context:**

- BayTrust has a unique mandate to understand and support communities across the entire BOP through a range of investment models.
- To act as a regional voice and advocate for BOP communities.
- Provide regional leadership in philanthropic best practice.

**Assumptions:**

- Innovation and adaptability are important to find new solutions.
- Sound fiscal management is essential to sustainability. Inter-generational implications are considered.
- Learning, adaptability and reflection are critical to understanding impact.
- The need to balance investment for long term results whilst embracing short term opportunities is acknowledged.
- Utilising a funding plus model will assist in achieving outcomes.
- The environment is the foundation of our communities.

**Our Values:**

- **Kaitiaki** (guardianship) of our assets, our people and our environment.
- **Together we are strong.**
- **Innovative** and **Balanced** solutions produce the best results.
- **Everything** we do, we will do well.
- We will make a **real difference.**

## 2.3

## Governance

**Bay of Plenty Community Trust (BayTrust) was initially incorporated on 5 August 1988 as the Trust Bank Bay of Plenty Community Trust in accordance with the provisions of the Trustee Banks Restructuring Act, 1988. It continues under the provisions of the Community Trusts Act, 1999. The purpose of the Trust as outlined in its Trust Deed is to provide charitable, cultural, philanthropic, recreational and other benefits to Bay of Plenty communities.**

### Role Of The Board

The 12 Trustees of BayTrust are appointed by the Minister of Finance for terms of four years with Trustees generally not exceeding two terms. They are responsible for the direction and supervision of the Trust's business.

The Board's principal responsibility is to invest the assets of the Trust in a broad range of diversified investments designed to maximise the total amount of community distributions that can be financed over the long term and maintain the real (inflation-adjusted) value of the Trust's capital.

In meeting this responsibility the Board approves the adoption of appropriate strategies and objectives and reviews the performance of the Trust against these objectives.

It also approves operating and grants budgets and reviews operating performance against budgeted performance.

### Delegation of Authority

The formulation and implementation of certain procedures (under specific policies), other than those reserved specifically for the Board are delegated to Management. The Board monitors this delegation as part of the formal business of the Board meetings.

### Conflicts of Interest

It is recognised that Trustees have a wide range of involvement throughout the Bay of Plenty region and as such, the potential for conflict will arise from time to time.

In order to cover this eventuality, Trustees disclose (by policy) their involvement with other organisations, do not take part in discussions relating to organisations which they have a conflict of interest (unless the consent of fellow Trustees is obtained) and do not vote on any matter where a conflict or potential conflict exists.

### Investment

Investment decisions relating to the Trust are undertaken in accordance with the Statement of Investment Policies and Objectives (SIPO) which has been determined by the Trustees.

The Trust operates under a Fiduciary Management Agreement with Seattle-based Russell Investment Group. This relationship allows the Trust to benefit from more efficient investment implementation and adjustments to global market conditions. The Trust also operates a monitoring arrangement with Auckland-based Actuaries Melville Jessup Weaver to provide formal, independent monitoring of the Russell performance.

### Grants

At the commencement of each financial year the Board determines the allocation and level of grant funding going into the year with the aim of delivering a consistent level of granting to the community whilst maintaining and protecting (through the use of reserves) the real (inflation-adjusted) value of the Trust's capital.

Smaller applications up to \$5,000 are considered by a Committee on a monthly basis to provide a quick response to these applicants.

### Committees

The Board has formally established four subcommittees to assist with the operation of the Trust, namely Audit and Risk, Human Resources, Investment and Policy and Planning.

### 3. How We Make a Difference



WWI From Tauranga to the Trenches Exhibition



Sport Bay of Plenty – CoachForce



Te Arawa Lakes Trust



Tauranga's Youth Search and Rescue Programme



Project Tongariro Volunteer

## 3.1

## Finding Themselves While Learning

### To Save Others

**There are plenty of ways to get lost, injured, trapped or stranded in New Zealand's great outdoors.**

**Thankfully some of our youngest community members are learning the necessary search and rescue techniques right here in the Western Bay.**

Tauranga's Youth Search and Rescue (YSAR) programme is a unique three year course offered to teenagers aged 14 to 18. Over 50 students from throughout the Bay of Plenty currently meet every Wednesday evening at Otumoetai College and also attend 12 weekend training exercises a year.

#### Survival Skills

YSAR Chairman and co-founder, Steve Campbell, says the aim is to impart a love, respect and understanding for the New Zealand wilderness through specific training programmes which prepares the students to save the lives of lost and injured people. Steve, who is a Civil Defence Emergency Management Coordinator for the Bay and a volunteer Trustpower TECT Rescue Helicopter

winch operator and crewman, first started the group in 2009.

Training includes core bushcraft, navigation, tracking, first aid, and search and rescue skills, as well as obtaining their Coastguard Day Skipper License, leadership and management skills.

This year BayTrust granted Tauranga YSAR \$11,000 towards Emergency Management Qualification and operational costs. Many of the courses completed meet National Standards and students can gain credits towards their NECA school qualifications. 150 students have been trained since the organisation started.

#### Launching Careers

"The students have gone on to great things – they've chosen careers in fields such as law, paramedic, police, outdoor education, defence force officers... they tend to find their place in life and career through the programme. And aside from the core objectives, lots of personal development also takes place like discipline, the ability to communicate within large groups and social interaction. It's wonderful to see."

Upon graduating, students have all the necessary skills to become full active members of New Zealand Land Search and Rescue (LandSAR) if they wish.

## 3.2

## Creating Local Jobs To

### Boost The Eastern Bay's Prosperity

**Creating permanent jobs in the Eastern Bay of Plenty for local residents is no easy task.**

**Agriculture, horticulture and forestry are the dominant industries but technology and innovation is helping these sectors become more productive while requiring less physical labour.**

The Eastern Bay of Plenty Regional Economic Development Trust (which is known as Toi-EDA), is working hard to overcome this challenge and create long-term employment opportunities in Kawerau, Opotiki and Whakatane.

Trust Chairman, John Galbraith says the ongoing development of a mussel farm off the coast of Opotiki is forecast to generate over 300 jobs by the time it's fully operational in 2025. And the kiwifruit industry's future also looks bright.

#### Combining Workforces

"Kiwifruit employs about 1800 people in the Eastern Bay during peak harvest time but only 100 or so people fulltime

during the year relying quite heavily on immigrant labour and itinerant backpackers.," John explains.

Maintenance staff, forklift operators, process operators and management are required for both industries and many common skills are involved.

#### Groundwork Being Laid

Initial research into both industries has already been carried out. Now, Toi-EDA is beginning 'phase two'. Information will be combined to see what skills, people and training is required, and what timing and seasonality is involved. Implementation will then take place.

#### Financial Support

Phase two is expected to take up to 18 months to complete and cost approximately \$80,000. BayTrust has contributed \$30,000 towards the project, and the rest will be sought elsewhere.

"We're trying to maximise the opportunity for local people regarding employment and development to help promote the wealth and wellbeing of our whole district."

## 3.3

## Remembering The Bay's ANZAC Heroes

A poignant exhibition portraying the stories of Tauranga's WW1 soldiers and their families was displayed at the Classic Flyers museum earlier this year.

**The four week exhibition, entitled WWI from Tauranga to the Trenches opened on Anzac Day and ran until May 23rd with BayTrust granting \$5,000 towards this project.**

Michelle Whitmore from Metro Marketing helped curate and design the exhibition along with her colleague, Andy Galaxy. She says the purpose was to tell the stories of Tauranga's soldiers focusing on the diversity of experience, and also to reflect on the experiences of those at home, particularly the women and children.

"There is a book of the same name (From Tauranga to the Trenches) which has been written and published by Fiona Kean from the Tauranga Heritage Collection. Fiona was involved with our project team from start to finish, and she



acted as our mentor and the guardian/oracle in terms of historical accuracy."

Marty Cantlon from Marty's Signs was the other core team member involved, taking care of the spatial planning, layout and logistics, plus all of the canvas production.

### Informative Display

Michelle says the exhibition was broken down into several distinct phases including a timeline and context; population facts and information; a focus on Gallipoli; individual soldier experiences; reflections from those at home, the role of the Bay of Plenty Times as a communication hub; and the experience of coming home for the soldiers (and the turmoil they lived with afterwards).

Overall the exhibition was deemed to be a wonderful success. "We estimated that 12,000 to 13,000 people visited in the four week period it was open.

## 3.4

## Creating A Happier Home For Bay Men and Their Families

Mount Maunganui's Dave Halligan once asked a friend at a Women's Refuge a simple question: 'what happens to the men?'

**The answer was 'nothing'.**

**When women and children flee from violence or abuse in their homes, no-one was counselling the men or trying to find out what was going wrong in their lives.**

So in 2010 Dave established Parenting For Men – an organisation dedicated to helping men of all ages resolve issues and problems in their lives so they can become better dads, partners and husbands.

"If we can focus on the parenting skills of men, we can start to make progress in other areas like family violence, relationships and poverty."

### Help in the home

Dave has worked with around 60 men and their families over the past year. He visits clients in their homes as often as

needed, and is available by phone or text message to offer support at any time.

"A calm, safe whanau environment is what it's all about. The home is where the change has to happen so partnering with families in their home is a really important facet of what we do."

### A listening ear

Dave spends hours talking and listening with each male and their wider family, to help them problem solve, improve their parenting and communication skills, set goals and improve conflict resolution skills.

"Often it doesn't take long to get to the heart of things. Most of the guys I work with haven't had an adult male to talk to about these sorts of issues, so once we start it all comes pouring out."

This year BayTrust granted \$15,000 to Parenting For Men to help Dave continue his work.

"A peaceful and calm household. That's the sort of result we're looking for. That alone has a big impact on the outcomes for both adults and the children. Then we can get to work on their skill sets."

## 3.5

## Project Tongariro: Helping Look

### After Our Land For 30 Years

**As the head of a volunteer-based conservation society, Kiri Te Wano is used to making a little go a long way.**

**The Tongariro Natural History Society, known as 'Project Tongariro', rely on a budget of just \$65,000 a year to operate. But they manage to turn it into \$300,000 plus worth of conservation outcomes each year.**

"We have a small group of highly active and enthusiastic volunteers," she says. "Last year we managed about 5000 volunteer hours, which equates to about \$87,000 of man hours."

That effort is all the more impressive considering the Tongariro District's small population. "One of the things we do to counter this is to offer a varied list of ways to volunteer – from social events such as marshalling, to tree planting days or undertaking predator control."

#### Staying On Track

Kiri is one of two part-time paid employees. This year BayTrust granted \$25,000 towards Project Tongariro's operating costs.

#### Protecting Natural Assets

The society was formed in 1984 to promote a wider knowledge and appreciation of the unique natural heritage, historic, educational and recreational values of Tongariro National Park and the surrounding environment.

It works in partnership with the Department of Conservation and carries out a number of long-term projects around the district.

Removing invasive willows, re-planting the Waimarino and Waiotaka riverbanks with native species and predator control are the main focus areas, and work has been on-going for the past 11 years.



## 3.6

## Helping Rotorua Students

### Get Back On Track

**Everyone needs a second chance in life – and Te Arawa Lakes Trust in Rotorua is providing that opportunity for many students every year who have dropped out of secondary school.**

**Heddell Raerino, who manages the Trust's Employment and Training Unit, says students aged 16 to 19 are given the chance to complete two different NCEA level 1 qualifications that will then help them progress onto further training and employment.**

"We see ourselves as a place where students can mature," Heddell says. "Our main focus is picking up those students who have fallen through the cracks of mainstream education and putting them back onto a pathway to succeed."

#### Valuable Skills On Offer

The Trust's Employment and Training Unit offers a National Certificate in Employment Skills which is a 20 week course covering topics such as creating

a CV, health and safety, interview skills, time management, keyboard skills, as well as numeracy and literacy.

Heddell says about 70 per cent of students also complete the National Certificate in Automotive Skills which is a 16 week course. There's an automotive workshop and classrooms on site at the Employment and Training Unit's base in Ngapuna, Rotorua, and two fulltime tutors oversee the coursework.

"Many of our students go on to do either NCEA level 2 or 3, or courses at places like polytech. Some go into the armed services as well and we work with the recruiting office here in Rotorua to help them gain entry."

#### Numeracy and Literacy Support

This year BayTrust granted \$21,000 to the Te Arawa Lakes Trust to help support the students' needs. Extra pastoral care has been provided as a result, and another person to be employed to help focus specifically on literacy and numeracy skills.

## 3.7

## Sport Bay of Plenty

### – CoachForce

#### Coaching at its best!

**18 years after BayTrust seed funded the CoachForce programme it is still steaming ahead. BayTrust grants multi-year (quarterly) funding of \$422,500 per year.**

The grant supports grass-roots coaching in 19 sporting codes across the Bay and further contributes to sporting excellence in the Bay through Coach and Athlete Scholarships.

By the end of the current contract, BayTrust will have devoted a grand total of \$8.5m to this sporting initiative – by far the biggest commitment the Trust has ever made to one project.

BayTrust Scholarships continue to recognise sporting excellence in our

region. These Scholarships recognise both athletes and coaches, aiming to support and assist Bay of Plenty sporting talent to achieve on the national and international sporting stage and allow coaches to develop new skills that can be delivered back to the community.

Both Scholarships are open to sports people residing in the region with the intention that the coaching expertise and sporting talent is retained in the Bay.

Applications highlight the exceptional sporting and coaching talent that exists within the Bay region and these Scholarships demonstrate an appreciation for the hard work, commitment and dedication that these athletes and coaches give to their sport and communities.



## 3.8

## BayTrust Rescue Helicopter

**The BayTrust Rescue Helicopter is a highly valued service throughout the Rotorua – Bay of Plenty region, which locals rely on when time-critical medical treatment and rescue services are required.**

BayTrust supports the Rotorua-based rescue helicopter, to the tune of \$200,000 per year. It is one of five machines operated by the Taupo-based Philips Search and Rescue Trust providing free 24/7 search and rescue and air ambulance services, throughout the central North Island.

**“And it’s... it’s like the advertisement. It’s a lovely sound when you hear them hover above you... it truly is”.**

Referring to the welcome arrival of the Rescue helicopter after lying at the bottom of a bank with a shattered knee.

*Maggie*

**“Life wouldn’t be good without a rescue helicopter would it?”**

Will fell from a horse.

**“A second chance because of you, we are absolutely overwhelmed and praise the land and air rescue services”.**

Phil had had a heart attack on a rural property.





## 4. Scholarships

## We provide two types of Scholarships for tertiary students:

- The Dillon Scholarship
- The Bruce Cronin BayTrust Scholarship

• **The Dillon Scholarship** provides financial assistance to students with significant disabilities who are intending to pursue tertiary education.

This year \$95,352 was awarded to 40 recipients (24 of which were returning students from the previous year).

• **The Bruce Cronin BayTrust Scholarship** is named after Bruce Cronin who was the first Manager of BayTrust serving from 1996 to 2014.

Applicants must have an undergraduate degree from a New Zealand University and have links to the BayTrust geographical area either born in, or attended school in, or have whakapapa back to the area.

One Scholarship will be awarded each year and carry an award of \$5,000 to support study postgraduate study at masters or doctoral level in either Mathematics, Science or Information Technology.

### 4.1

#### Callum Hunter, Tauranga

- Dillon Scholarship Recipient



**Callum Hunter has loved studying classics and economics at Auckland University for the past two years, so it was an easy decision to add a Bachelor of Theology to his workload for 2015.**

"I took a couple of courses last year and it was really enjoyable. It sits in well with classics in terms of history. I spend a lot of time studying the church under the early Roman Empire and I'm hoping to do Honours or maybe my Masters in it."

The 20 year-old from Tauranga received a \$3,000 Dillon Scholarship from BayTrust this year, having suffered his entire life from an unknown condition that affects his digestive system and other muscles.

"It fatigues you really quickly so you don't have a lot of energy by the end of the day. When I'm studying I have to be really careful not to get bogged down and take enough time out to rest and recuperate."

Callum says receiving a Dillon Scholarship has eased the financial pressure and worry associated with studying fulltime. It will allow him to focus on university without the need to get a part-time job to support himself.

"That's huge because spending that sort of energy on working to live would have made uni undoable for me if I didn't have that financial help."

### 4.2

#### Kimberley Maxwell

- Recipient of the first Bruce Cronin BayTrust Scholarship



**Kimberley Maxwell grew up fishing for Kahawai with her family at the mouth of the Mōtū River in the Eastern Bay of Plenty.**

Now, with the support of the inaugural Bruce Cronin BayTrust scholarship, she's working hard to preserve that experience for future generations of New Zealanders.

Kimberley is half way through completing her PhD in Marine Biology at Victoria University. Her thesis examines how the Bay of Plenty Kahawai fishery can be managed using a big picture "ecosystems management" approach. "Since the period of intense commercial fishing in the late 1970s some Māori of the Eastern Bay of Plenty have continued to express concern over the status of the Kahawai stock, which has not been addressed. This research is an attempt to address this concern," she says.

Kimberley spends her summer months at the Mōtū River mouth, 40km east of Ōpōtiki, interviewing the locals and examining the fish caught there. The \$5,000 Bruce Cronin BayTrust Scholarship will help Kimberley fund these trips north from Wellington, and allow her to pay her research assistants a small amount to acknowledge their efforts.

Kimberley aims to complete her Doctorate by Sept 2016. From there, her ultimate dream is to see a marine biology research centre established in the Eastern Bay of Plenty.

## 5. Beyond Funding

BayTrust has the ability to do so much more than granting.

We are in a constant process of asking ourselves “how can we be more effective?”, and “how can we create positive impact for communities and groups within our resources?”

There are eight different ways we provide assistance beyond giving grants. We call it the “BayTrust Community Toolbox”

1. **Capacity Building** - subsidising workshops, mentoring, advisory, consultancy.
2. **Funding Forums** - supporting events that bring other funders together with community groups.
3. **Support for Collaborative Efforts** - supporting projects where groups or communities are trying to “get together” to start an initiative that will be helpful to that community.
4. **Assistance from the BayTrust Team to provide** - knowledge, referrals, names and contacts for other funders, links and advice on funding and fundraising matters.
5. **Social Investments and Loans** - investing into projects that create social and economic returns. See the social housing project story, next.
6. **Community Hubs** - assisting community hubs that provide office space and meeting rooms for voluntary and community groups.
7. **Research** - funding research projects that benefit multiple groups or communities.
8. **Marketing** - helping groups promote themselves and tell their stories to the community.

## 5.1

## Social Loans Help More Bay Families Into Homes

Having a warm, dry, safe home to call your own can make a massive difference to a family's life.

**Research shows good housing can improve people's physical and mental health, boost their educational achievement and lower crime rates.**

**That's why BayTrust has committed nearly \$2m to low-interest social loans for social housing projects in the Western Bay of Plenty in the last two years.**

Two organisations, Habitat for Humanity Tauranga and the Tauranga Community Housing Trust, have received loans of \$819,200 and \$760,000 respectively to help vulnerable residents either buy or rent a long-term home.

BayTrust's Community Investment Advisor Terri Eggleton says the funds have been loaned to both organisations at a lower rate than commercial banks.

"This social loan has enabled Habitat to go from building 10 houses a year to building 20."

Habitat's philosophy is to give people a "hand up, not a hand out". Families are specifically chosen for their Assisted Home Ownership programme and are required to physically help build their house alongside other volunteers and often using donated or discounted building materials.

Once complete, the family makes affordable rent payments to Habitat. This rent-then-buy model allows families to build up a deposit which they can then use when seeking independent finance to eventually buy their home from Habitat.

Terri says social housing schemes are a great way to break the cycle of poverty which many families fall into. "Once people have a permanent house they can become part of the community, their kids can stay at the local school, they can put roots down and everything gets better. It's a very positive cycle."



**"This social loan has enabled Habitat to go from building 10 houses a year to building 20."**



## 5.2

## Creating A Connected Social Sector In The Western Bay

Working for a non-profit social sector organisation is a rewarding but often stressful job.

**For the past two years the Social Sector Innovation Trust (SSIT) has been working to bring local organisations together to help and support them.**

Trust facilitator Kathy Webb says the purpose is to provide value-added support by gathering information, conducting research and advocacy, and providing opportunities for groups to learn, network and collaborate with one another.

### One Voice

“There was no one agency in the Western Bay that operates and speaks for the whole social sector before we began in 2013,” she says.

The trust’s vision is to have ‘a valued and connected social sector’ which includes groups working across the education, health and disability sectors.

### Forum Support

As part of its efforts, the Trust organised a Thinking and Working Smarter forum in July last year which BayTrust contributed \$2,000 towards.

Around 80 or 90 people representing a range of different social sector organisations spent a day meeting and learning together.

“We ran a number of workshops on topics such as collaboration, financial management for community organisations and project evaluation which people found really useful,” Kathy says. “And we also held a panel discussion with funders from BayTrust, TECT and the Acorn Foundation. It was really an opportunity for people to ask questions and for the funders to explain what key things they look for when assessing a funding application.”

“It was very worthwhile. BayTrust’s support in ensuring our costs were covered was a huge factor in the success of the day.”



**The trust’s vision is to have ‘a valued and connected social sector’ which includes groups working across the education, health and disability sectors.**

## 5.3

## Working Collaboratively To Achieve A Brighter Future

A lot of emphasis is placed on asking community groups to work together. BayTrust also wants to work collaboratively to help achieve its long-term goals for its community.

**BayTrust recognises making long-term sustainable changes will take more than one organisation, funder or community group. Only by working together can we make a real difference.**

Last year BayTrust teamed up with the Ministry for Social Development and the Community Response Forum to examine how they can best support children in the first 1000 days of their lives (from the time of conception), and how to engage youth in their region.

BayTrust identified these two developmental phases as critical times when the right support and/or interventions could have the biggest impact in enabling every individual to reach their full potential.

The group is known as the Bay Brighter Futures Funders Collaboration. The Trust commissioned a significant research project last year to identify opportunities they could act upon for these two age groups. The project was run by the Centre for Social Impact and combined local knowledge about what was happening for children and youth in the Bay of Plenty with national and international research on successful youth engagement initiatives and what's required in the first 1000 days of a child's life.

Community Hui were held in four BOP regions last September to seek input from a broad range of people and communities. Those involved in health, early childhood education, youth services and social and community organisations provided input on their priorities and vision for youth and babies in their first 1000 days.

BayTrust's Community Investment Advisor Terri Eggleton says it's important to remember the saying 'do nothing about me, without me'.

In February the entire research project, including the community hui feedback, was presented to the Bay Brighter Futures Funders Collaboration which Terri says was an "exciting and positive" session.

The Bay Brighter Futures Funders Collaboration group is currently working through a range of options to effectively support their goals.

"We have a wealth of information and insight. The challenge now is to put this into action.

"This group has the willingness, the knowledge and the resources to assist in making positive changes to the lives of families, young children and youth in our region. We are taking a long-term view, but some actions will begin occurring soon."

To read the research findings see: <http://www.baytrust.org.nz/2015/02/investing-social-impact-bay-plenty/>



**“This group has the willingness, the knowledge and the resources to assist in making positive changes to the lives of families, young children and youth in our region.”**

## 6. Summary of Financial Statements



## 6.1

## Notes to the Summary of Financial Statements

### Reporting entity

Bay of Plenty Community Trust (BayTrust) is domiciled and incorporated in New Zealand in accordance with the provisions of the Community Trusts Act 1999.

For financial reporting purposes BayTrust is designated a Public Benefit Entity. Its primary purpose is to distribute income from its investments activities to the Bay of Plenty communities.

### Basis of Preparation

#### - Statement of compliance

The summary financial statements have been prepared in accordance with FRS 43 - Summary Financial Statements and have been extracted from the full financial statements. The full financial statements have been prepared in accordance with the Financial Reporting Act 1993 and New Zealand Generally Accepted Accounting Practice (NZ GAAP) as appropriate for Public Benefit Entities and comply with New Zealand International Financial Reporting Standards (NZ IFRS) and its interpretations.

The summary is extracted from the full financial statements authorised for issue by the Trustees on 18th June 2015. Once issued the Trustees do not have the power to amend these statements. The full financial statements have been audited and an unmodified opinion has been given. This summary has also been examined by KPMG and a copy of their summary unmodified audit opinion is included in this report.

The summary financial statements cannot be expected to provide as complete an understanding as is provided by the full financial statements.

A copy of the full financial statements can be obtained from the BayTrust website [www.baytrust.org.nz](http://www.baytrust.org.nz) and is available from BayTrust, PO Box 13322, Tauranga 3141, Tel 07 578 6546 or 0800 654 546, or send a request to [info@baytrust.org.nz](mailto:info@baytrust.org.nz).

The summary financial statements are presented in New Zealand dollars and rounded to the nearest thousand dollars.

#### - Basis of measurement

The financial statements have been prepared on the basis of historical cost except for assets and liabilities as outlined in the notes to the full financial statements.



## 6.2

## Bay of Plenty Community Trust Incorporated 2015 Financial Statements

Statement of Comprehensive Income	2015	2014
<i>For the year ended 31 March 2015</i>	<b>\$ 000s</b>	<b>\$ 000s</b>
<b>Income</b>		
Income from investments	24,310	17,180
Other income	155	69
	24,465	17,249
<b>Expenses</b>		
Trustees remuneration and expenses	214	193
Portfolio management & advisory fees	1,144	1,092
Other administration costs	946	654
Grants expenditure	2,871	1,940
	5,175	3,879
<b>Total comprehensive income for the year</b>	<b>19,290</b>	<b>13,370</b>

Statement of Changes in Equity	2015	2014
<i>For the year ended 31 March 2015</i>	<b>\$ 000s</b>	<b>\$ 000s</b>
Balance as at 1 April 2014	173,505	160,135
Total comprehensive income for the year	19,290	13,370
<b>Balance as at 31 March 2015</b>	<b>192,795</b>	<b>173,505</b>

Statement of Financial Position	2015	2014
<i>For the year ended 31 March 2015</i>	<b>\$ 000s</b>	<b>\$ 000s</b>
<b>Trust Equity</b>		
Trust capital	89,308	89,308
Grants maintenance reserve	50,895	33,839
Inflation reserve	52,592	50,358
	192,795	173,505

<b>Current Assets</b>		
Cash & cash equivalents	-	271
Short term deposits	22	215
Prepayments	161	-
Loans to community groups	83	96
	266	582
<b>Non Current Assets</b>		
Investments	191,901	172,850
Loans to community groups	1,393	798
Other non current assets	54	72
Fixed assets	62	31
	193,410	173,751
<b>Total Assets</b>	<b>193,676</b>	<b>174,333</b>
<b>Less Liabilities</b>		
Cash & cash equivalents	(34)	-
Other Liabilities (all current)	(847)	(828)
	(881)	(828)
<b>Total Net Assets</b>	<b>192,795</b>	<b>173,505</b>

Statement of Cashflows	2015	2014
<i>For the year ended 31 March 2015</i>	<b>\$ 000s</b>	<b>\$ 000s</b>
Cash Flows from Operating Activities	(3,456)	(3,157)
Cash Outflows from Investing Activities	3,151	3,153
Net (decrease)/increase in cash and cash equivalents	(305)	(4)
Cash and cash equivalents at 1 April 2014	271	275
<b>Cash and cash equivalents at 31 March 2015</b>	<b>(34)</b>	<b>271</b>

## 7. Auditors Report

## 7.1

## Independent Auditor's report on the summarised financial statements

### To the Trustees of Bay of Plenty Community Trust Incorporated

The accompanying summary financial statements, which comprise the summary statement of financial position as at 31 March 2015 and the summary statements of comprehensive income, changes in equity and cash flows for the year then ended and notes, are derived from the audited financial statements of Bay of Plenty Community Trust Incorporated ("the trust") for the year ended 31 March 2015. We expressed an unmodified audit opinion on those financial statements in our report dated 18 June 2015. Those financial statements, and the summary financial statements, do not reflect the effects of events that occurred subsequent to the date of our report on those financial statements.

The summary financial statements do not contain all the disclosures required for full financial statements under generally accepted accounting practice in New Zealand. Reading the summary financial statements, therefore, is not a substitute for reading the audited financial statements of Bay of Plenty Community Trust Incorporated.

### Trustees' responsibility for the financial statements

The Trustees are responsible for the preparation of a summary of the audited financial statements, in accordance with FRS-43 Summary Financial Statements.

### Auditor's responsibility

Our responsibility is to express an opinion on the summary financial statements based on our procedures, which were conducted in accordance with International Standards on Auditing (New Zealand) (ISA (NZ)) 810 Engagements to Report on Summary Financial Statements.

Other than in our capacity as Auditor we have no relationship with, or interests in, the Trust.

### Opinion

In our opinion, the summary financial statements, derived from the audited financial statements of Bay of Plenty Community Trust Incorporated for the year ended 31 March 2015, are a fair summary of those financial statements, in accordance with FRS-43 Summary Financial Statements.



18 June 2015

Tauranga

# 8. Grants Expenditure



Tarawera Highschool Outdoors Course



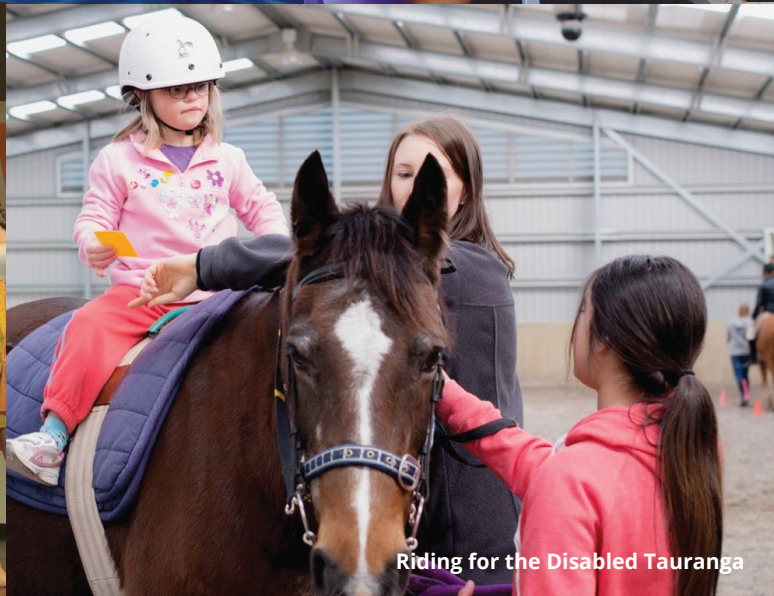
The Parenting Place Course



Motu Trails Boardwalk



Stage Challenge



Riding for the Disabled Tauranga



2015 Jazz Festival - Historic Village

## 8.1

## Grants Expenditure to 31 March 2015

Group	Funding towards	Amount
<b>Active Communities</b>		
Coastguard Eastern Region	Marine communications network/op costs	\$40,000
Coastguard Lake Taupo Assoc Inc	CRV replacement	\$7,664
Coastguard Turangi	Towards Operational costs	\$10,000
Katikati College	Completion of multi-purpose astro-turf	\$15,000
Maketu Volunteer Coastguard	Operational costs	\$19,870
Mt Maunganui Lifeguard Service	Surfsports coaching	\$20,000
NZ Response Team Trust	Swift Water team equipment	\$28,000
Omokoroa Golf Club Inc.	Automated External Defibrillator	\$1,000
Opotiki Surf Life Saving	Lifeguard Manager	\$5,000
Opotiki Volunteer Coastguard Inc.	Operational costs	\$8,260
Papamoa Swimming Club Inc.	Pool Management & poolside coaching	\$5,000
Rotorua Lakes Volunteer Coastguard	Operational costs	\$12,050
Rotorua Touch Assoc Inc	Maori Touch National tournament	\$10,000
Sport Bay of Plenty (includes 2016 commitment)	Coachforce programme	\$845,000
Taupo BMX Club Inc	Asphalt the Taupo BMX track Berms	\$5,000
Te Awanui Hauora Trust	First Response Operations Manager	\$10,000
Te Puke Scout Group	Operational costs	\$1,500
Tga Search & Rescue Trust	Transportable radios	\$10,819
The Order of St John Katikati	New ambulance station	\$5,000
Waihi Beach Volunteer Coastguard	Operational costs	\$20,280
Waikato BOP Area Judo Association	Judo Mats	\$1,000
YSAR Tauranga - Youth Search and Rescue Tauranga Trust	2014 Emergency Management Qualification & Operational costs	\$11,000
	<b>Sub-Total</b>	<b>\$1,091,443</b>

## Community Economic Development

Bethlehem Community Patrol	Operational costs	\$2,395
Eastern BOP Regional Econ Dev	EBOP Workforce planning	\$30,000
Geyser Community Foundation	Operational costs	\$10,000
Katikati Community Resource Centre	Operational costs	\$25,000
Kawerau Enterprise Agency Inc	K-Town Community Mens Shed	\$5,000
Lighthouse Presbyterian Church	Upgrade of Op Shop premises	\$3,000
Merivale Community Inc.	3 hour Governance Training	\$1,000
Mokoia Community Assoc	Operational costs	\$20,000
Motu Trails Charitable Trust	Cycling Mountain Biking Tourism Marketing Network	\$5,000
Mount Maunganui Community Patrols	Operational costs	\$2,100
Priority One - Western BOP Inc.	Instep programme operational costs	\$15,000
Social Sector Innovation WBOP Charitable Trust	Operational costs	\$20,000
Social Sector Innovation WBOP Charitable Trust	Thinking & Working smarter forum	\$2,000
Taupo Budget Advisory Service Inc.	Operational costs	\$7,600
Taupo Citizens Advice Bureau Inc.	Global funding	\$15,000
Taupo Council of Social Services	Operational costs	\$18,000
Taupo Council of Social Services	Collective Impact project	\$2,875
Taupo Neighbourhood Support	Operational costs	\$16,000
Te Roopu-A-Iwi o Te Arawa	Operational costs	\$15,000
Te Runanga o Ngati Whakaue Ki Maketu Inc	Healthy Whare	\$35,000
Te Runanganui o Te Arawa Inc	Back to Basics survival programme	\$5,600
The Acorn Foundation	Operational costs	\$10,000
The Acorn Foundation	Vital Signs research programme	\$6,752
The Inspiring Communities	Operational costs BOP	\$15,000
Turangi Budget Services Inc	Operational costs	\$15,000
Turangi Neighbourhood Support	Operational costs	\$10,000
Volunteer WBOP	Future proof Volunteer WBOP	\$10,000
Wairakei Primary School	Sound & lighting system for community hall	\$6,700
Welcome Bay Community Centre Incorporated	Operational costs	\$15,000
Welcome Bay Community Centre Incorporated	Neighbours Day Aotearoa	\$3,500
	<b>Sub-Total</b>	<b>\$347,522</b>

Culture & Heritage		
Bethlehem Baptist Church	A 'Night before Christmas' event	\$10,000
BOP Classic Aircraft Trust	WW1 exhibition	\$5,000
Detour Theatre	Operational costs	\$10,000
Greerton Village Community Assoc Inc	IlluminArt - Light Art Festival 2014	\$10,055
Katikati Open Air Art Inc	NZ Mural Contest & Arts festival	\$10,000
Ngati Awa Research & Archives Trust	Flexible & relocatable exhibition space	\$11,330
NZ Cuban Festival	NZ Cuban Festival Feb 2015	\$5,000
Opotiki Heritage & Cultural Museum	Operational costs	\$2,000
Ra Whakangahau Trust	Kapahaka Festival 2014	\$1,000
Rotorua Arts Village Trust	Solutions focussed sessions	\$2,000
Rotorua Lakeside Concert CT	2015 Lakeside concert	\$10,000
Taupo District Council	Waitangi Taupo Moana Festival 2015	\$2,000
Tauranga Art Gallery Trust	ArtBus costs	\$10,000
Tauranga Jazz Soc Inc	2015 Tauranga Downtown Carnival	\$10,000
Terere Marae Maori Reservation	Roof repairs on community hall	\$3,000
The Incubator	Operational costs	\$24,098
The Lake Taupo Arts Festival Trust	Erupt Lake Taupo Arts Festival 2014	\$10,000
The National Woodskills Trust	2014 National Woodskills competition	\$2,585
The Stage Challenge Foundation	Stage Challenge & J Rock	\$4,000
	<b>Sub-Total</b>	<b>\$142,068</b>

Education		
BOP Science Fair Inc	2014 NIWA Science Fair	\$3,800
NZ Centre for Gifted Children	Subsidies for students - Rotorua	\$15,000
Storytime Foundation Trust	Books For Babies BOP	\$10,245
Tarawera High School	Assistance for outdoor education course	\$5,000
Te Arawa Lakes Trust	Tutor/student support	\$21,000
Wairakei Playcentre	Window replacements	\$5,000
	<b>Sub-Total</b>	<b>\$60,045</b>

Healthy Communities		
Age Concern (Rotorua)	Operational costs	\$19,240
Age Concern (Tga) Inc	Tauranga Age Friendly City	\$1,500
Apopo	At risk young people programme	\$30,000
Atua Awhi Community Charitable Trust	Foodbank operational costs	\$1,000
Auckland District Kidney Soc Inc	Operational costs	\$10,000
Autism NZ Inc	Operational costs for Taupo region	\$11,804
Beachaven Family Services	Operational costs	\$15,000
Big Brothers Big Sisters Rotorua	Operational costs	\$10,000
BOP Multiple Sclerosis Soc	Operational costs	\$8,840
CanTeen BOP	Operational costs	\$12,000
Central Plateau REAP Inc	Young Mums & Family Start Male Mentor Programmes	\$53,000
Cool Bananas Youthwork Trust	Operational costs	\$5,000
Disabilities Resource Centre	Operational costs	\$25,000
Families Achieving Balance Charitable Trust	Operational costs	\$20,000
Get Smart Tga Trust	Operational costs	\$20,000
Grief Support Services Inc	Operational costs	\$5,000
Growing Through Grief - Te Puke	Seasons Programmes	\$2,000
Growing Through Grief - Tga	Operational costs	\$5,000
Growing Through Grief - Whakatane	Operational costs	\$2,500
Growing Through Grief Opotiki	Operational costs	\$3,640
Habitat for Humanity	Operational costs	\$30,000
Haemophilia Foundation NZ	Outreach Services in BOP	\$9,500
Hearing Dogs for Deaf People NZ	Operational costs	\$5,000
Katikati Community Resource Centre	Youth Mpowa project operational costs	\$23,000
Kawerau Blue Light Ventures Inc	Operational costs	\$20,000
Kimiora Community Trust	Operational costs	\$10,000
Life-Link Community Trust	Operational costs	\$2,500
Living Well Church CT	Foodbank expenses	\$500
Maketu Ongatoro Wetland Soc	MOWS Operational development	\$10,000
Manawahe Eco Trust	Operational costs	\$10,000
Mangakino Family Services	Foodbank operating expenses	\$2,000
Merivale Community Inc.	Operational costs	\$30,000

<i>Healthy Communities Cont.</i>		
NZ Blue Light Ventures	Kidsmart Handbooks	\$7,528
NZ Council of Victim Support groups	Operational costs	\$10,000
Opotiki Blue Light Ventures Inc	Blue Light programme	\$20,000
Pacific Island Community (Tga)	Operational costs	\$15,000
Papamoa Support Centre	Foodbank and Family Support	\$18,000
Parenting for Men	Operational costs	\$15,000
Parents Centre NZ Inc	Manager Capability & Development	\$3,400
Parkinsonism Society Incorporated Tauranga	Operational costs	\$10,000
Philips Search & Rescue Trust	BayTrust Rescue Helicopter	\$200,000
Pregnancy Counselling Services	Operational costs	\$5,000
Reach Out Trust	Foodbank expenses	\$2,000
RMH Auckland Trust	12 Mths accommodation subsidy for BOP families.	\$6,344
Rotorua District Riding for the Disabled	Building of administration block & covered arena	\$30,000
Rotorua Wake & Ski Club	Lake Tikitapu Floating wetland	\$43,000
Southern Lake Taupo Health Trust	Emergency Generator project	\$25,000
St Chads Communication Centre Trust	Operational costs Community Arts & Life Skills programmes	\$15,153
St Peters Care & Counselling CT	Operational costs	\$25,000
St Vincent de Paul soc	Foodbank expenses	\$2,000
Stroke Foundation of NZ Midland Region	Operational costs & vehicle replacement	\$17,500
Talklink Trust	Assistive communication support	\$7,500
Taupo Blue Light Ventures	Blue Light Programme	\$38,825
Taupo Community Mens Shed Trust	Operational costs	\$5,000
Tauranga (BOP) Hearing Assoc Inc	Operational costs	\$16,237
Tauranga District Group Riding for the Disabled	Operational costs	\$10,000
Tauranga Living Without Violence	Operational costs	\$15,000
Tauranga Moana Nightshelter	Operational costs	\$25,000
Tauranga Regional Multicultural Council Inc.	Operational costs	\$5,000
Tauranga Youth Development Team	Operational costs	\$15,000
Te Aranui Youth Trust	Great Pathway Youth Development Programme	\$30,000
Te Puke Community Hub Charitable Trust	Operational costs	\$3,000
Te Puke High School	CACTUS programme	\$16,500
Te Whanau Kotahi Trust	Operational costs	\$10,071
Te Whare o Manaaki	Evaluation	\$5,000
The Parenting Place	Toolbox parenting courses	\$15,000
The Salvation Army, Rotorua Community Ministries	Foodbank Christmas hampers	\$1,000
The Salvation Army, Whakatane Community Ministries	Foodbank Christmas hampers	\$1,000
The Tanners Point Residents & Ratepayers Assoc Inc	Boardwalk project	\$2,888
Tongariro Natural History Soc	Operational costs	\$25,000
Tongariro Whanau Support Trust Inc	Operational costs	\$3,000
Turangi Bluelight Ventures	Bluelight programmes, Life skills, holiday programmes etc	\$24,262
Turangi Foodbank Inc	Foodbank expenses	\$2,000
W.I.S.E Better Homes	Healthy Homes Rotorua	\$60,000
WERA Aotearoa Charitable Trust	Whakatane Youth Development through Sports programme	\$39,675
Western BOP Disability Support Trust	Disability Networking seminar	\$1,090
Whakaatu Whanaunga Trust	Foodbank expenses	\$2,000
Whakatane Baptist Community Trust	Jezreel Women's support home	\$10,000
Youth Development Trust WBOP	Kiwican programme	\$30,000
Youth Encounter Ministries Trust	Dirt Bike Encounter' (DBE) pilot programme	\$15,000
Youth Projects Trust	Manaakitanga programme costs	\$20,000
	<b>Sub-Total</b>	<b>\$1,136,997</b>
<b>Dillon Recipients</b>	40 Recipients	<b>\$95,352</b>
<b>Grants Refunded</b>		<b>(\$3,000)</b>
	<b>Grand Total</b>	<b>\$2,870,427</b>





First 1000 Days



Taupo Waitangi Moana Festival



Youth Encounter - Dirt Bikes



Coastguard Waihi Beach Vessel Assist



CanTeen - Surfing



Habitat for Humanity

